



**REUSABLE PACKAGING
SHUTTLE BOXES
STANDARD AND CUSTOM-MADE**



FRENCH DESIGN AND MANUFACTURE SINCE 1981

CLASSIC TRUNKS

- Hinged lid
- Recessed butterfly clasps
- 9mm all birch plywood
- Very good product protection
- Designed for heavy and/or bulky equipment
- Max. load 300kg



Resistant, ergonomic
and durable products



Ultra resistant to shocks, scratches and impacts

- Hexagonal coating gray or black
- Stackable with wheels



Very resistant to shocks, scratches and impacts

- Brown phenolic film coating



Very resistant to shocks, scratches and impacts

- PVC coating color
- Ideal for identifying your brand or material
- Several colors in stock
- Stackable with wheels

OPENROAD® TRUNKS

Ideal for light equipment

- Flat and removable lid
- OpenRoad® Sliding latches:
 - completely recessed
 - opening and closing by simple pressure
 - key locks (optional)
- 9mm all birch plywood, brown phenolic film coating, very resistant to shocks, scratches and impacts
- Very good product protection
- Max. load 100kg



TRANSPORT OR STORAGE BINS

Transporter et stocker votre matériel facilement

- 12mm all birch plywood, brown phenolic film coating, very resistant to shocks, scratches and impacts
- Side cutouts for fork passage
- Material visualization
- Stackable with wheels
- Easily manipulated
- Max. load 300kg



MOBILE STORAGE UNIT (USM)

Safe and ergonomic for industrial logistics

- **Peoples' security**

The USM is equipped with manually operated "dead man" system braked casters and a foot operated brake bar that help secure the crate and the user in many circumstances. The passage of the forks avoids tipping when moving from the box to the forklift. The covers are retractable to avoid collisions in the open position.

- **Ergonomic design**

The height of the handles complies with standard NF X35-109. The loading of the USM is facilitated thanks to the sliding shelves. The height of the removable shelves is adjustable every 50 mm. The handling of the lids is facilitated by weight compensation springs. The lids are equipped with lockable sliding clasps.

- **Robust build**

The USM has a payload capacity of 500kg. Impact resistance is greater than 1960m/s² 200g. The "deadman" system brakes have been tested to 1 million cycles.

- **Size suitable for trucks**

The 120 x 80 cm format is particularly optimized for loading trucks (33 USM per semi-trailer).

- **Maintenance & repair**

The USM consists of elements assembled by screwing which makes it completely removable. Damaged parts are easily replaceable. Its almost unlimited lifespan considerably reduces its environmental impact.



SAFETY ROLL

Safe and ergonomic for industrial logistics

- **Peoples' security**

The roll is fitted with manually operated "dead man" system castors and a foot-operated braking bar which secures the body and the user in many circumstances. The passage of the forks avoids tipping when moving from the roll to the forklift. The lids are hinged to avoid collisions in the open position.

- **Ergonomic design**

The height of the handles complies with standard NF X35-109. The doors are equipped with a clasp which can be locked by key.

- **Robust build**

The roll has a payload capacity of 600kg. The "deadman" system brakes have been tested to 1 million cycles.

- **Size suitable for trucks**

The 120 x 80 cm format is particularly optimized for truck loading (33 rolls per semi-trailer).

- **Maintenance & repair**

The roll is made up of elements assembled by screwing which makes it completely removable. Damaged parts are easily replaceable. Its almost unlimited lifespan considerably reduces its environmental impact.



PALLETIZABLE BOXES

Formats optimized for pallet transport

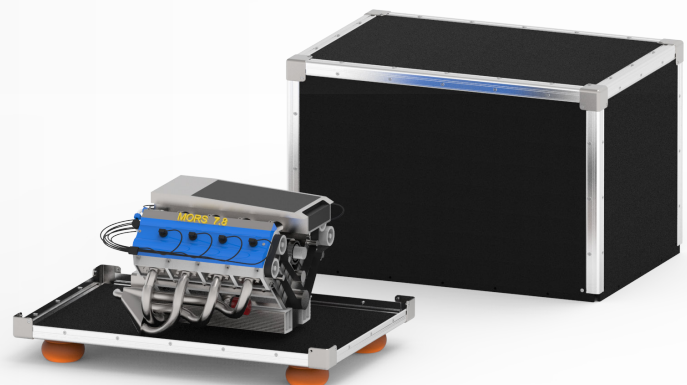
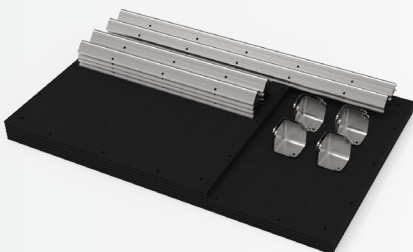
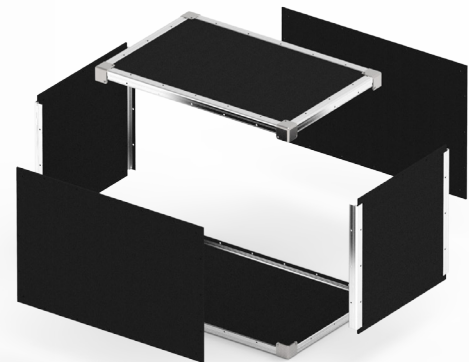
- Flat and removable lid
- OpenRoad® Sliding latches:
 - completely recessed
 - opening and closing by simple pressure
 - key locks (optional)
- 9mm all birch plywood, brown phenolic film coating, very resistant to shocks, scratches and impacts
- 4 plastic feet for stacking
- Several sizes available
- Very good product protection
- Formats suitable for road transport
- Palletizable on Euro pallet
- Stackable, functional and ergonomic
- Casters Ø100 including 2 with brakes (optional)



SKELCASE®, COLLAPSIBLE CASES

Ideal for reducing transport costs

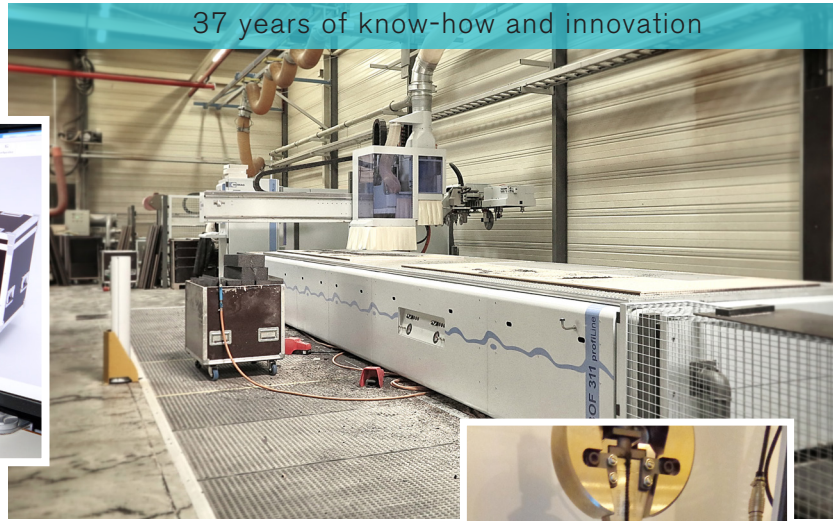
- Excellent product protection
- Assemble or disassemble in minutes by screwing
- Dimensions adapted to road transport, sea and air
- Multiface opening and positioning
- Easy to assemble
- Delivered flat
- Palletizable and stackable
- Long life cycle / reusable
- Standard and made-to-measure manufacturing



EFFICIENT DESIGN AND DURABLE MANUFACTURING

The flight case is a reusable, durable and robust transport case intended for the packaging and protection of fragile materials (medical equipment, industrial devices, stage equipment, musical instruments, works of art, etc.) for transport by truck, plane or boat.

Strasbourg



An integrated design office

Our design office, made up of 5 engineers and technicians, is responsible for product studies and development. They are at your disposal to study your projects, analyze your constraints and propose appropriate technical solutions.

Safe handling

Our boxes guarantee optimal security of the transported product and people.

Optimization of transport costs

We offer personalized studies to optimize your packaging and reduce the cost of your logistics flows.

Tests & Trials

We carry out shock, damping, lifting, sealing and material resistance tests. The tests are carried out internally or externally according to your constraints and certification needs. At the end of the tests and on request, a detailed report of the results can be written.



“ We are a multidisciplinary team and dynamics of 25 people.

We have 8,000 m2 of premises which include a study and management platform, a production and storage site.

This proximity guarantees quality production and fast manufacturing times.

The performance of our management tools, our large stock of raw materials, our modern and efficient production site allow us to manage, manufacture and ship large volumes quickly.

We manufacture approximately 20,000 cases annually.



EXAMPLES OF TAILOR-MADE CREATIONS

Helicopterable IP56 box

Customer need

Transporting an electronic board by helicopter in a hostile environment.

RS solution

Development of a new generation of checkouts:

- degree of protection IP56,
- lifting certification,
- can be hoisted using lifting rings,
- security markings.

The body has undergone numerous shock and watertightness tests before validation in order to guarantee an optimum level of protection in real conditions.



6-seater telemetry flight case for Formula-E Techeetah

Customer need

Have an ultra-compact mobile flight-case for air transport comprising 6 workstations with 12 integrated 24" screens.

RS solution

Design of a modular flight-case with 3 or 6 positions.

Dimensions open: 2200 x 1720 x H2070

Dimensions closed: 2200 x 430 x H1050

This flight case includes:

- 1 box mounted on telescopic tubes allowing to integrate 2x6 screens,
- 2 3-position tables with 19" space,
- server and inverter compartment

The deployment of this module is extremely fast.



Flight case with ramp for medical equipment

Customer need

Shuttle box to protect the device and easily transport it for deployment and maintenance.

RS solution

Development and design of a box with folding access ramp with anti-tilt system.

The device is maintained using foams of different densities in order to guarantee optimal cushioning and shock absorption.

The access ramp facilitates the installation of the device in the flight-case without special handling.



18, rue du Cor de Chasse
67400 ILLKIRCH FRANCE

Phone: +33 (0) 388 650 615
Email: cases@r-sons.com