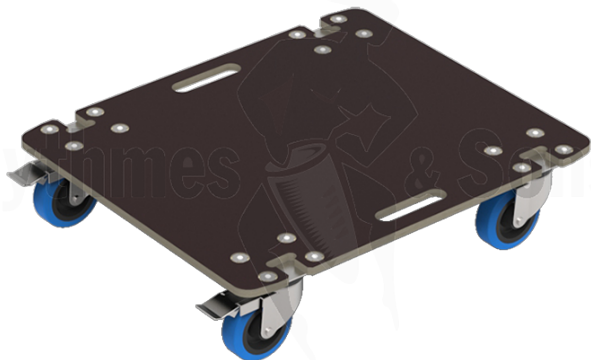


Flight cases / Miscellaneous supplies & Accessories / Accessories for 19"

Removable Board on castors for ClicTop® rack depth 540mm



CARACTÉRISTIQUES TECHNIQUES

Référence produit	FRC R51022
Poids brut (kg)	9.00
Interior dimensions (mm)	
Overall dimensions with wheels (mm)	

REMOVABLE CASTORS BOARD FOR CLIC TOP® RACK DEPTH 540MM

- > Overall Dim. : 540 x 635 x H150 mm
- > 9mm Film Faced Birch Plywood Brown
- > 4 swivel castors Ø100 (2 with brake)
- > Screw