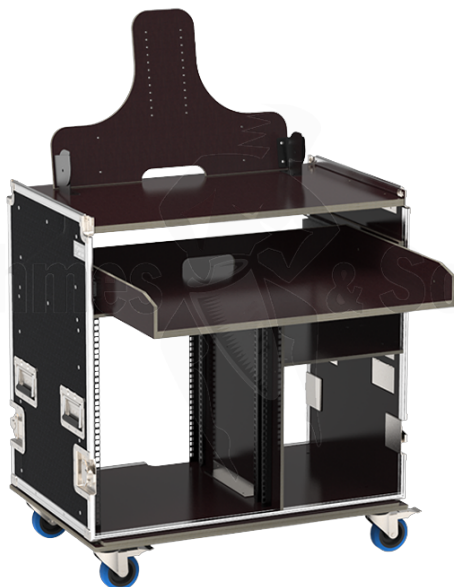


Flight cases / Mobile production racks / Mobile video production racks



12U 19" Mobile production rack + sliding shelf + 27" monitor



CARACTÉRISTIQUES TECHNIQUES

Référence produit	FVR 112-E27TC
Poids net (kg)	90.00
Brand	RYTHMES & SONS (flight-cases)
Overall dimensions with wheels (mm)	800x910xH1110
Useful height (U)	12U
Useful height (mm)	533
Useful depth (mm)	580
Maximum device depth (mm)	580 mm

12U VIDEO PRODUCTION RACK WITH SLIDING SHELF AND 27" SCREENS SUPPORT

Video Control Rack, The Ideal Solution for a Mobile and Secure Control Station

The video control rack 12U has been specifically designed to meet the needs of audiovisual professionals, event organizers, and video production teams.

It provides optimal protection for video equipment while ensuring an ergonomic and functional installation.

Manufactured from 9 mm birch plywood, this video workstation offers exceptional strength, making it perfectly suited for demanding conditions such as film shoots, live events, and mobile installations. Its ultra-resistant black hexagonal coating provides high-impact, scratch, and shock protection, ensuring long-lasting durability. The video control rack is equipped with removable front and rear lids, allowing easy access to equipment and ensuring a quick and efficient setup.

The recessed butterfly latches, with guided opening and closing movement, ensure enhanced security, while the padlock-compatible option protects equipment from unauthorized access. The spring-loaded recessed handles, featuring a double return spring, allow for easy handling and automatically return to a flat position to prevent snagging or damage during transport. The corner handles on the lids provide multiple grip points, making loading and unloading the rack more convenient. For quick content identification, the Tour Label plate located on the top lid is an essential feature for technical teams handling multiple racks simultaneously.

To ensure smooth mobility, the video control rack is fitted with a board with four Ø100 mm swivel casters, including two locking wheels for added stability and security.

The interior layout is fully optimized to guarantee a highly functional video control station. Inside, the 19" front and rear steel racking profiles (12U) allow for secure installation of electronic and video equipment. For easy mounting on the square holes of the profiles, cage nuts and screws are included.

At the top of the rack, a fixed shelf provides a stable workspace. A pivoting panel on the top shelf is designed to hold a 27" screen (VESA 100), offering a practical multi-screen setup for video monitoring. A sliding shelf on ball-bearing rails allows for keyboard storage, ensuring quick and easy access during operations. A cable routing cutout ensures a clean and organized setup, keeping all connections tidy and avoiding clutter.

This video control rack is ideal for use as a control station on film shoots, studio installations, conference room supervision, technical installations in theaters, and many more applications. It is the ultimate solution for demanding professionals looking for durability, ergonomics, and practicality in their audiovisual operations.

Type of Opening	Removable top lid, Front and back removable lids	Developed and manufactured by Rythmes & Sons in France
Material	9 mm birch plywood	
Finishing	Heavy-duty Hexagonal Pattern	
Color	Black	
Type of Latches	Large recessed padlocking butterfly latch with guided opening/closing mechanism	
Number of Latche(s)	8	
Type of Handle	Steel Recessed flip handle(s) with double sprung	
Number of Handle(s)	6 +4	
Tour Label dish	Yes - A5 format	
Feet	No	
Dish for stacking	No	
Stackable	No	
Rack strip rails	Steel Front and back 19"	
Shock mounted	No	
Interior features	Fixed top panel, Sliding shelf on ball-bearing slides (usable height=150mm), Sliding shelf on ball-bearing slides (usable height=180mm), Side compartment with shelf, Cutout for cable routing	
Nuts + screws quantity	36	
Castors	Board with 4 swivel castors Ø100 (including 2 with brake)	
Max. load	-	
Packed brand		
Packaged product		