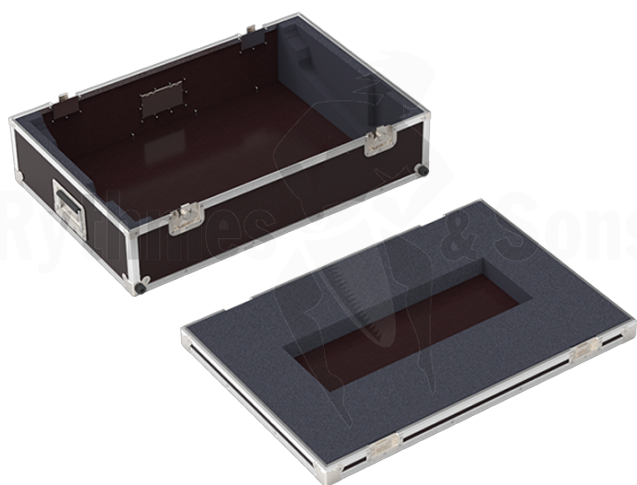


Flight cases / Lighting equipment flight cases / Flight cases for Lighting consoles

ADB OCEAN Flight case for lighting console



CARACTÉRISTIQUES TECHNIQUES

Référence produit	FEC AD OCEAN
Poids net (kg)	14.50
Brand	RYTHMES & SONS (flight-cases)
Quantity per case	1
Overall dimensions with wheels (mm)	915x615xH260

FLIGHT CASE FOR OCEAN ADB LIGHTING CONSOLE

Product specifications and fittings

- > Top opening with shallow base
- > 6.5 mm BROWN phenolic faced birch plywood
- > 4 small recessed butterfly latches
- > 3 recessed flip handles with double sprung

Interior features

- > Foam cut to the shape