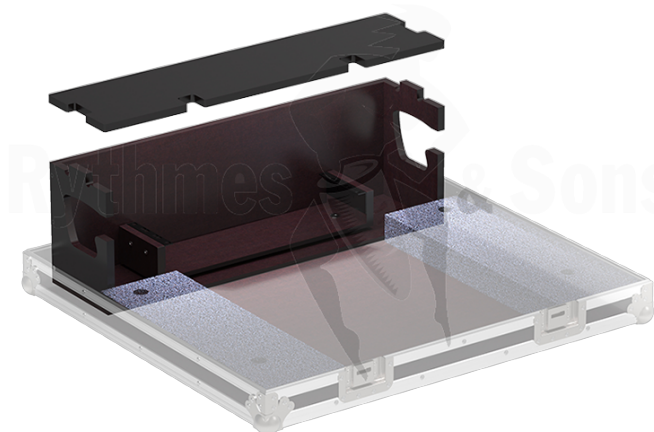


Flight cases / Audio equipment flight cases / Flight cases for Mixers

YAMAHA QL5 Doghouse for flight case ref.FST YA QL5



CARACTÉRISTIQUES TECHNIQUES

Référence produit	FST YA QL5BAC
Poids brut (kg)	8.00
Poids net (kg)	7.00
Packed brand	YAMAHA
Brand	RYTHMES & SONS (flight-cases)
Packaged product	QL5
Overall dimensions with wheels (mm)	820x205xH275

DOGHOUSE WITH LID FOR YAMAHA QL5 FLIGHT CASE

Product specifications and fittings

- > 9 mm BLACK phenolic faced birch plywood
- > Cut-outs for cable exit on the sides
- > Removable lid on top

Developed and manufactured by Rythmes & Sons in France